



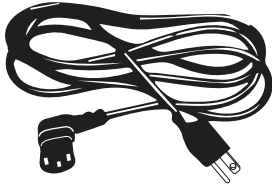
We protect what matters.

INSTALLATION INSTRUCTIONS

MEDICATION DISPOSAL KIOSK

1x

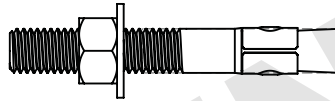
IEC AC POWER CORD WITH
RIGHT- ANGLE PLUG



KIT INCLUDES:

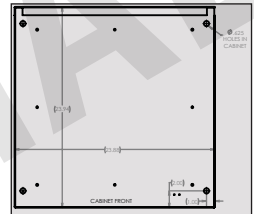
4x

1/2 FLOOR MOUNTING ANCHORS



1x

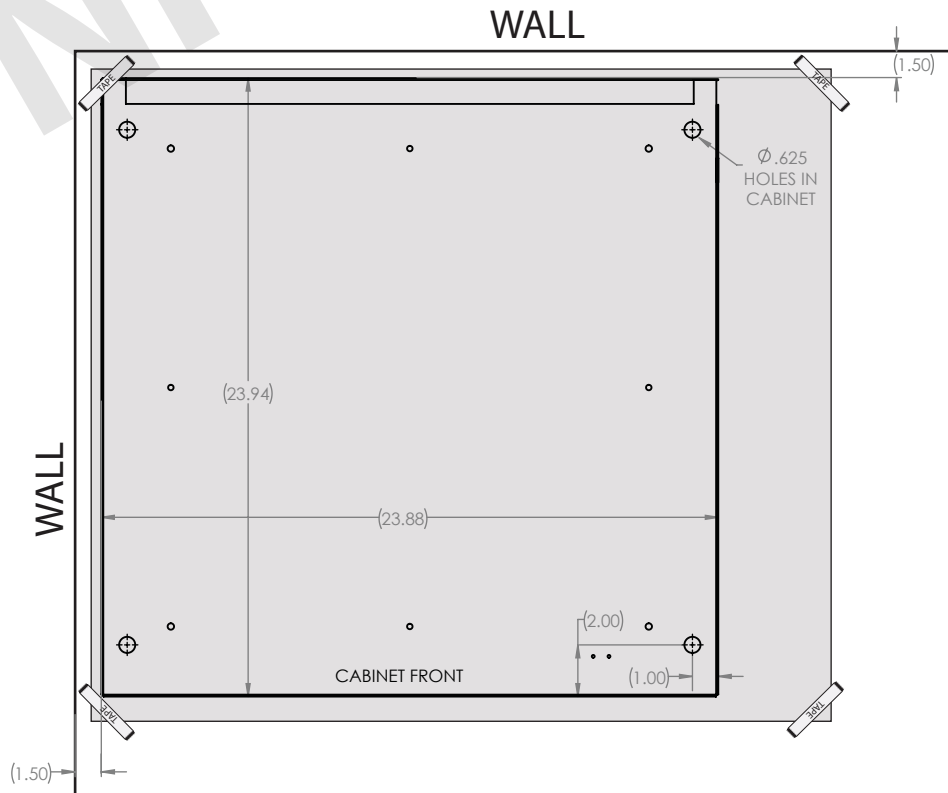
DROP BOX FLOOR MOUNT
DRILL TEMPLATE (AS-00019)



1

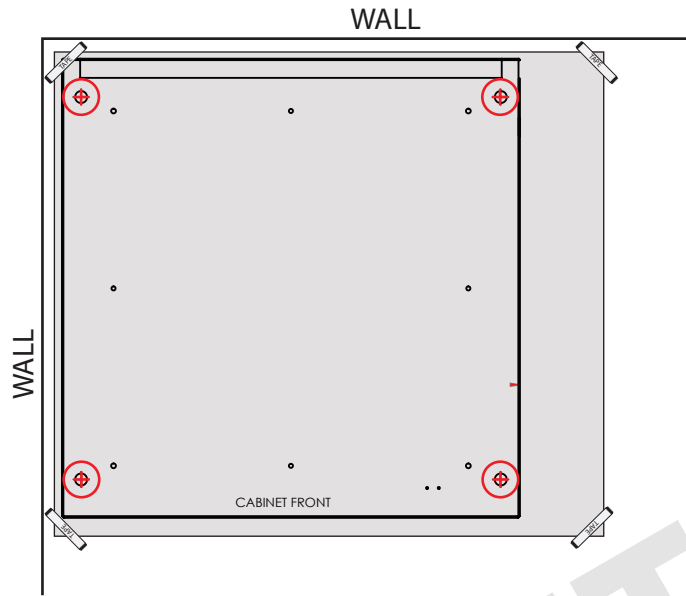
PLACE TEMPLATE ON FLOOR IN DESIRED LOCATION AND TAPE TO THE FLOOR TO HOLD IT IN POSITION FOR MARKING.

NOTE: IF UNIT IS TO BE PLACED AGAINST A WALL, MAKE SURE THERE IS AT LEAST 1 1/2" MIN. CLEARANCE BETWEEN THE WALL AND ANY SIDES OF THE CABINET



2

USING CENTER PUNCH OR OTHER SUITABLE MARKING METHOD,
MARK THE CENTER OF THE FOUR MOUNTING HOLES FOR DRILLING



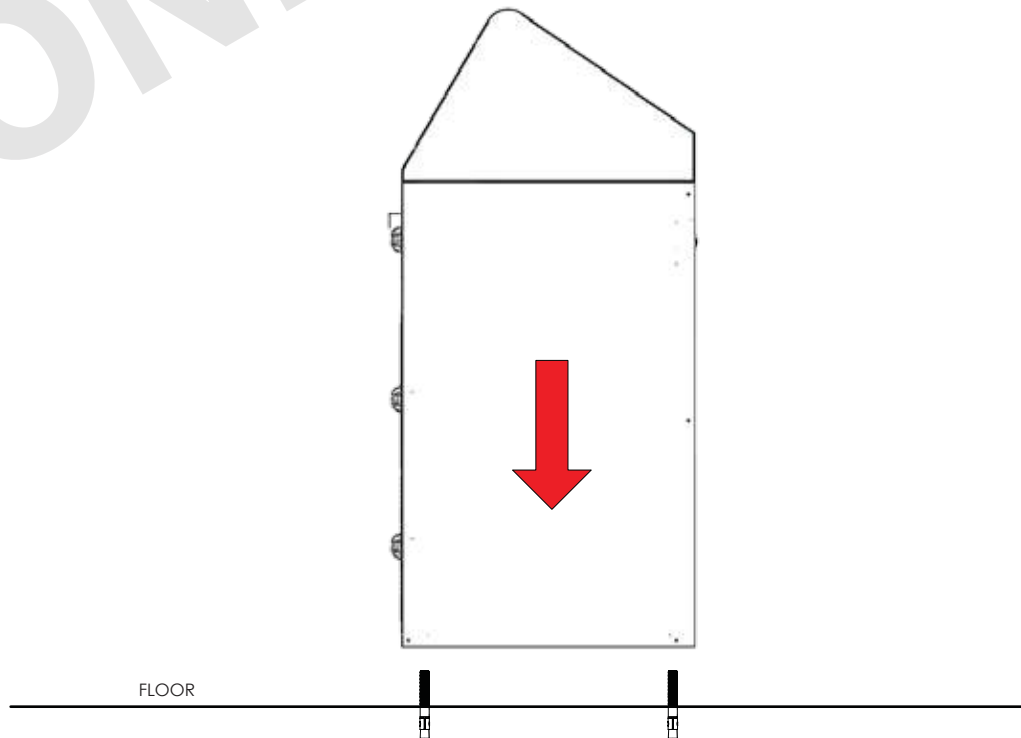
3

REMOVE THE TEMPLATE AND DRILL 4X, Ø1/2" HOLES @ 2 1/2" DEEP IN THE FLOOR FOR ANCHOR BOLTS;
ONE IN EACH CORNER

NOTE: IF YOUR HOLE IS NOT Ø1/2" X 2 1/2" DEEP THE ANCHORS MIGHT NOT HOLD PROPERLY

4

INSERT AND SET ANCHORS IN THE FLOOR. POSITION THE CABINET OVER THE ANCHORS



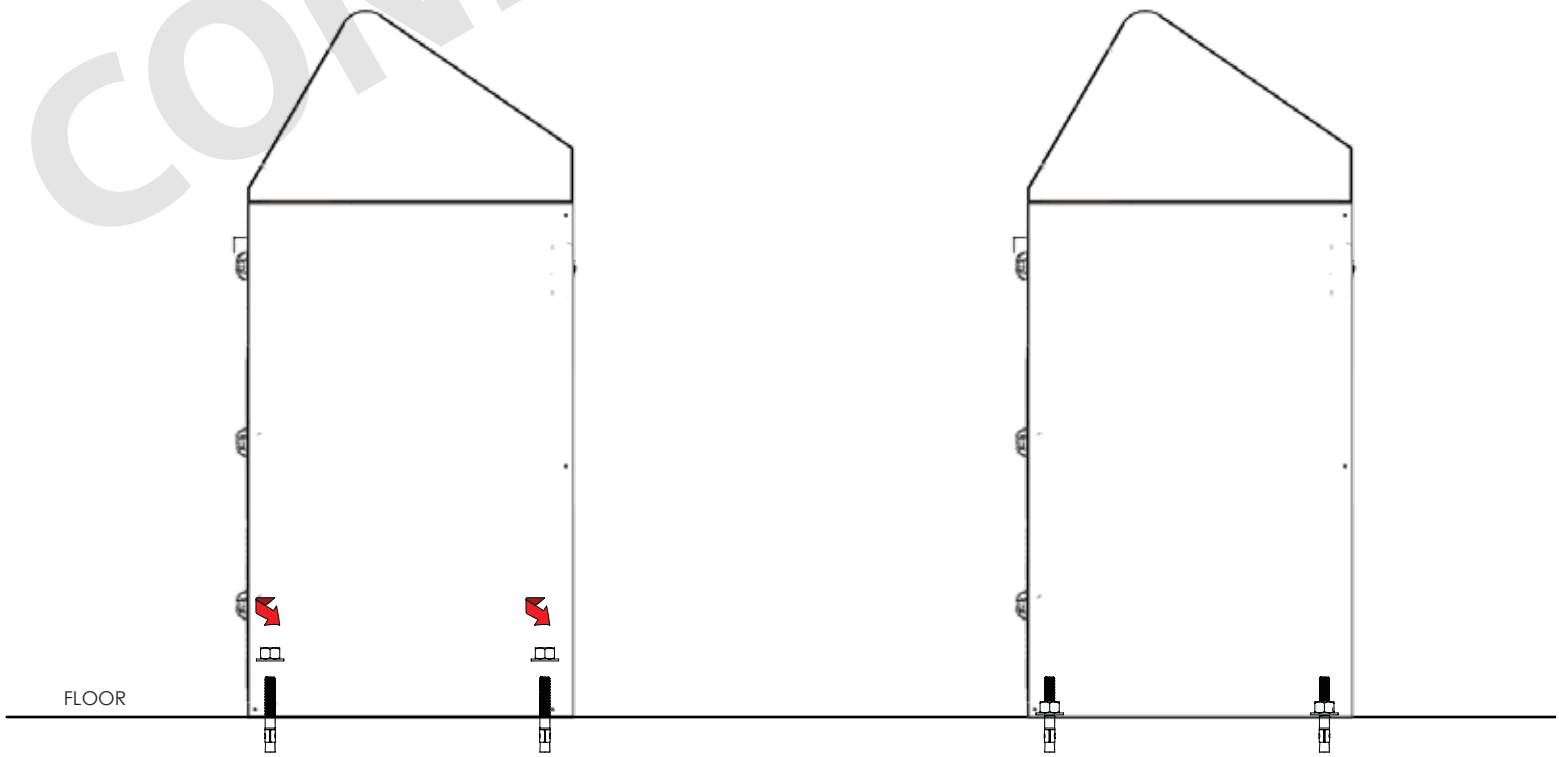
5

OPEN LOWER DOOR AND REMOVE CONTENTS



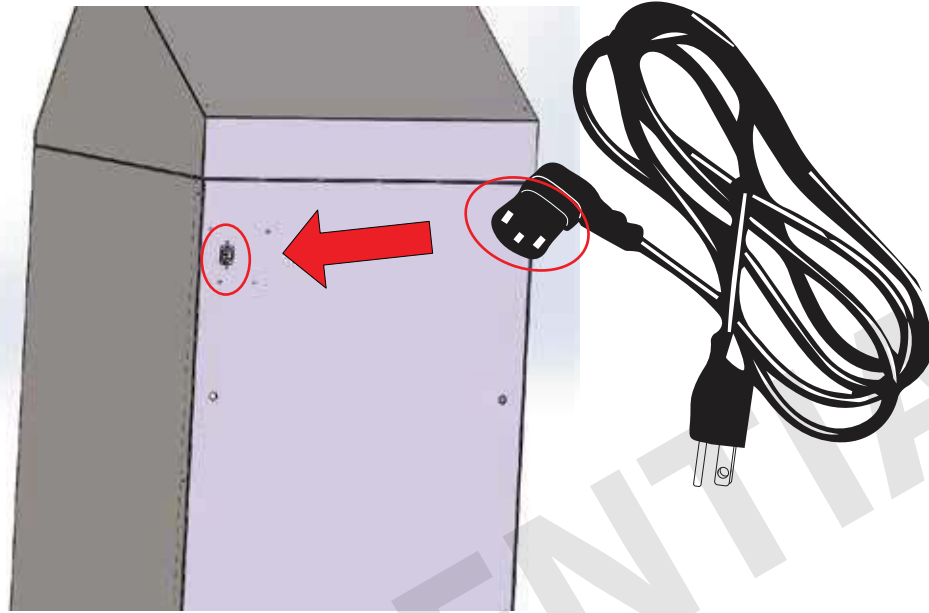
6

SECURELY FASTEN TO THE FLOOR USING THE SUPPLIED WASHER AND THREAD FASTENERS



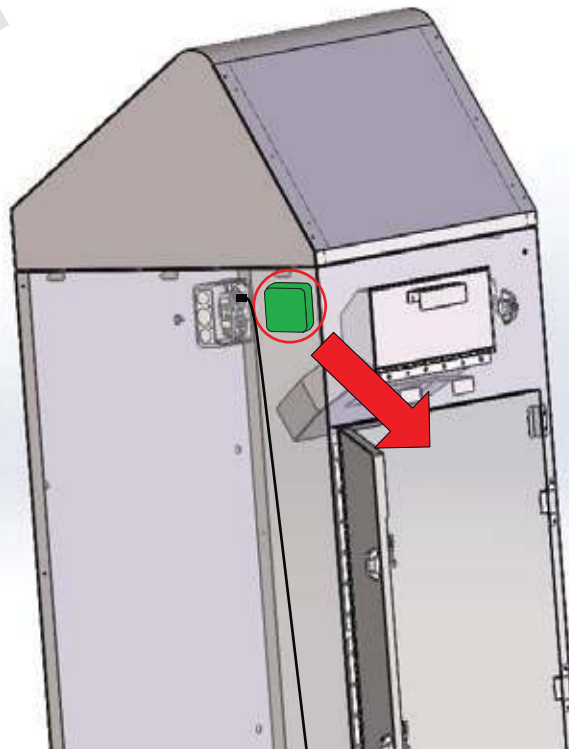
7A

UNITS WITH DISPLAY OR WITH OUT DISPLAY USING 110 AC
ATTACH IEC RIGHT ANGLE AC POWER CORD INTO THE BACK THEN PLUG INTO OUTLET
THIS INSTALL IS COMPLETE



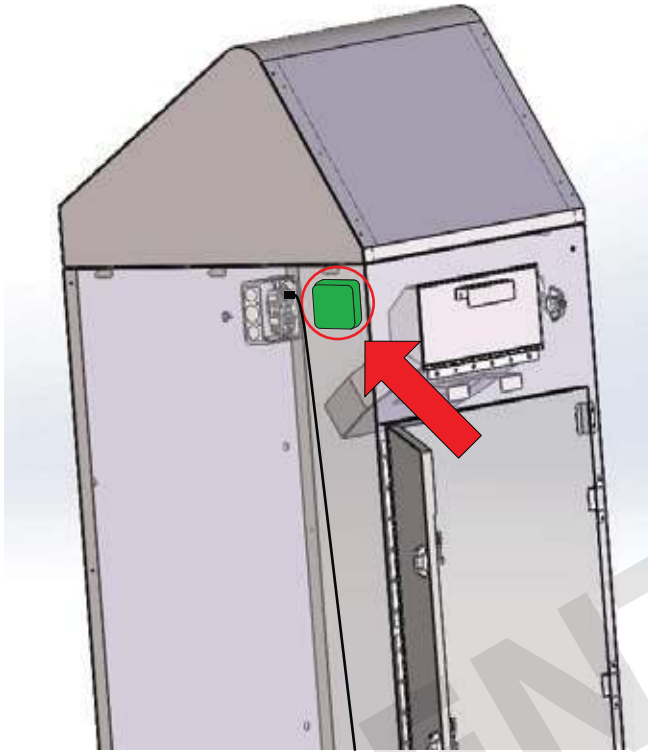
7B

UNITS WITH OUT DISPLAY WITH BATTERY POWER (NO 110 AC)
REMOVE THE BATTERY CASE FROM THE INNER RIGHT SIDE OF THE KIOSK (ATTACHED WITH VELCRO)



8

INSERT 4 AA BATTERIES, CLOSE CASE. REATTACH BATTERY CASE.



9

REMOVE USB CABLE FROM OUTLET NEXT TO BATTERY CASE AND PLUG IT INTO BATTERY CASE. THIS INSTALL IS COMPLETE

