

From Prescription to Disposal

Understanding the Impacts of Pharmaceutical Waste Management on Public Health and Safety

More than
HALF OF

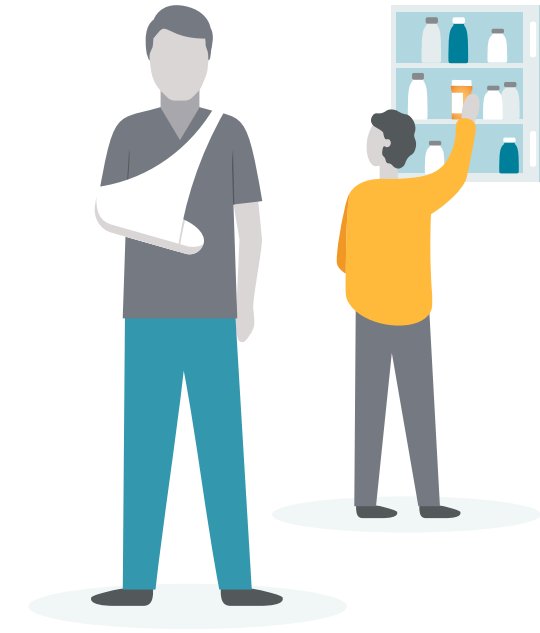
HEALTHCARE PROFESSIONALS surveyed believe that improperly disposed pharmaceutical waste is **one of the biggest contributors to the opioid epidemic**¹

93% OF

HEALTHCARE PROVIDERS surveyed report having concerns with pharmaceutical management in an at-home care setting¹

More than
90% OF

HEALTHCARE PROVIDERS AND ADMINISTRATORS surveyed believe that improper pharmaceutical waste management has a detrimental impact on the environment¹



52% OF **PROVIDERS** and **64%** OF **ADMINISTRATORS**

surveyed believe that it has been easier for opioids to **get into the wrong hands** during the COVID-19 pandemic¹

More than
100,000

AMERICANS DIED FROM DRUG OVERDOSES from May 2020 to April 2021, a 28.5% increase from the prior year and equal to nearly 274 deaths per day²

Nearly
HALF
OF AMERICANS

who misused pain relievers in 2020 say that they **got them from family and friends**, according to the Substance Abuse and Mental Health Services Administration³

Stericycle's Safe Community Solutions can help mitigate the risks of diversion and help combat the opioid crisis.



Seal&Send™ Consumer Medication Mail Back Envelopes

Stericycle's DEA-compliant mail back envelopes are designed for patients to dispose of unused controlled substances. Simply fill it, seal it, and place it in the mailbox.



MedDrop™ Medication Collection Kiosks

Stericycle's medication collection kiosks located in pharmacies, hospitals, and law enforcement agencies are a safe and convenient way for consumers to dispose of unused medications.

[Learn more about Stericycle's consumer drug disposal solutions.](#)

Sources:

1. Stericycle 2022 Healthcare Workplace Safety Trend Report, <https://www.stericycle.com/en-us/resource-center/original-research/healthcare-workplace-safety-report>
2. Centers for Disease Control, https://www.cdc.gov/nchs/pressroom/nchs_press_releases/2021/20211117.htm
3. Substance Abuse and Mental Health Services Administration, <https://www.samhsa.gov/data/sites/default/files/reports/rpt35325/NSDUHFFRPDEWHTMLFiles2020/2020NSDUHFFR1PDEW102121.pdf>