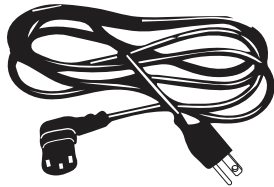


# INSTALLATION INSTRUCTIONS

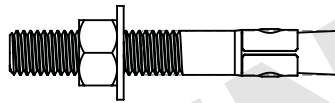
## MEDICATION DISPOSAL KIOSK

**1x**  
IEC AC POWER CORD WITH  
RIGHT-ANGLE PLUG

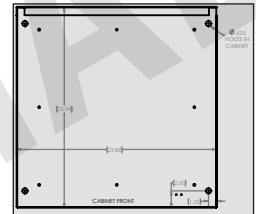


**KIT INCLUDES:**

**4x**  
1/2 FLOOR MOUNTING ANCHORS



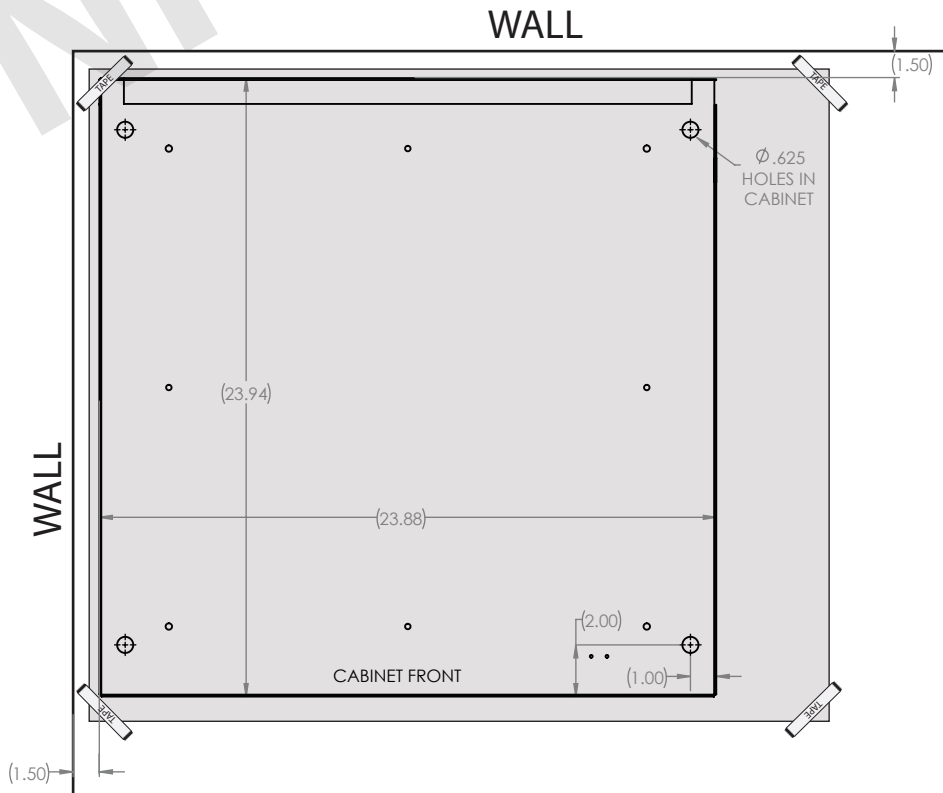
**1x**  
DROP BOX FLOOR MOUNT  
DRILL TEMPLATE (AS-00019)



**1**

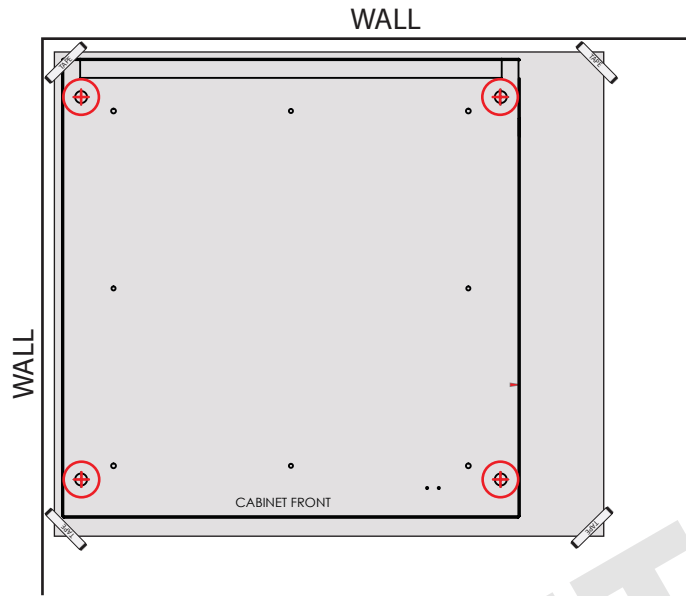
PLACE TEMPLATE ON FLOOR IN DESIRED LOCATION AND TAPE TO THE FLOOR TO HOLD IT IN POSITION FOR MARKING.

NOTE: IF UNIT IS TO BE PLACED AGAINST A WALL, MAKE SURE THERE IS AT LEAST 1 1/2" MIN. CLEARANCE BETWEEN THE WALL AND ANY SIDES OF THE CABINET



2

USING CENTER PUNCH OR OTHER SUITABLE MARKING METHOD,  
MARK THE CENTER OF THE FOUR MOUNTING HOLES FOR DRILLING



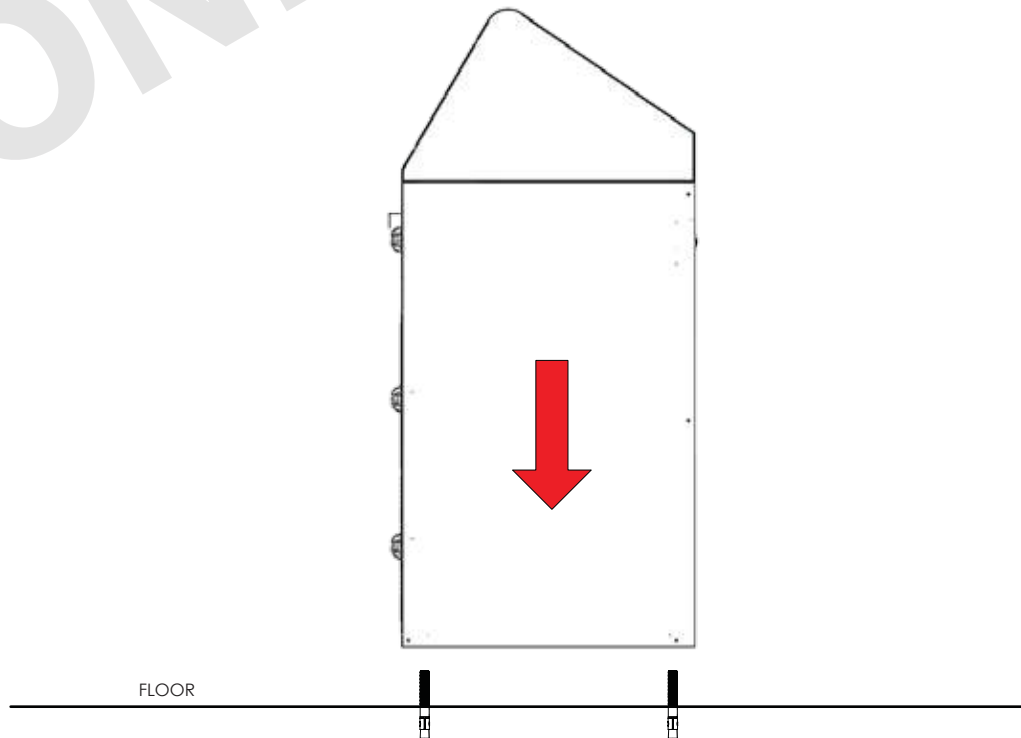
3

REMOVE THE TEMPLATE AND DRILL 4X, Ø1/2" HOLES @ 2 1/2" DEEP IN THE FLOOR FOR ANCHOR BOLTS;  
ONE IN EACH CORNER

NOTE: IF YOUR HOLE IS NOT Ø1/2" X 2 1/2" DEEP THE ANCHORS MIGHT NOT HOLD PROPERLY

4

INSERT AND SET ANCHORS IN THE FLOOR. POSITION THE CABINET OVER THE ANCHORS



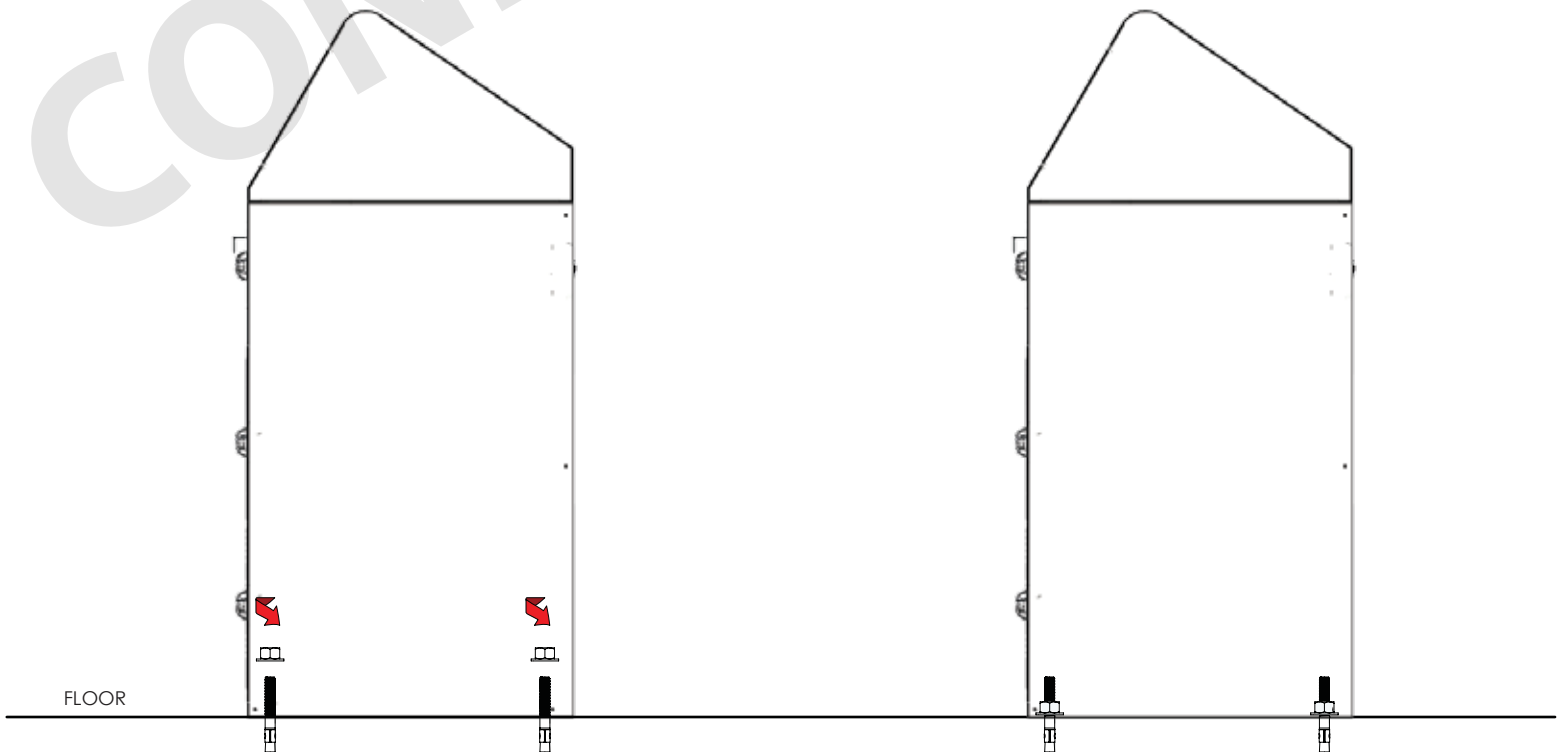
5

OPEN LOWER DOOR AND REMOVE CONTENTS



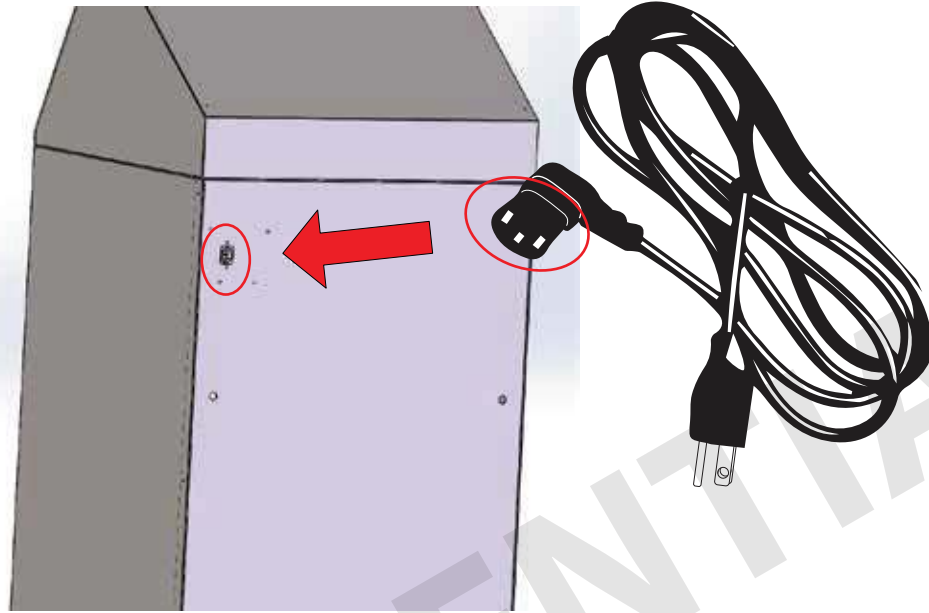
6

SECURELY FASTEN TO THE FLOOR USING THE SUPPLIED WASHER AND THREAD FASTENERS



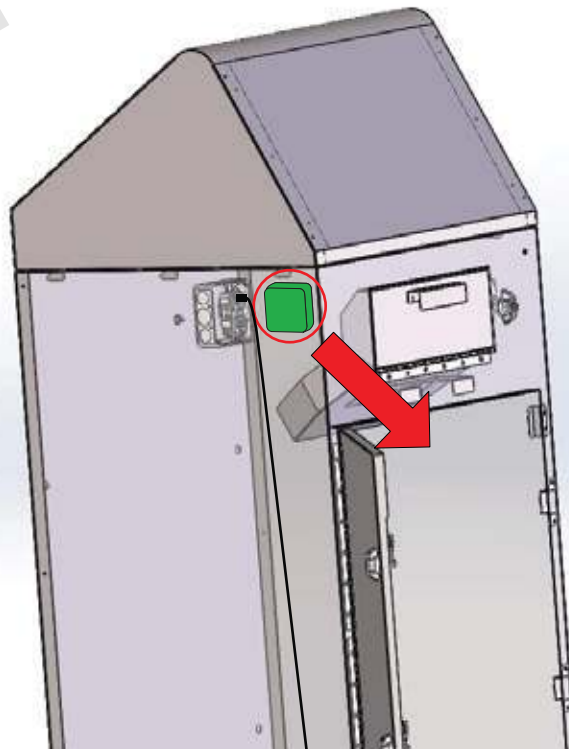
7A

**UNITS WITH DISPLAY OR WITH OUT DISPLAY USING 110 AC**  
ATTACH IEC RIGHT ANGLE AC POWER CORD INTO THE BACK THEN PLUG INTO OUTLET  
THIS INSTALL IS COMPLETE



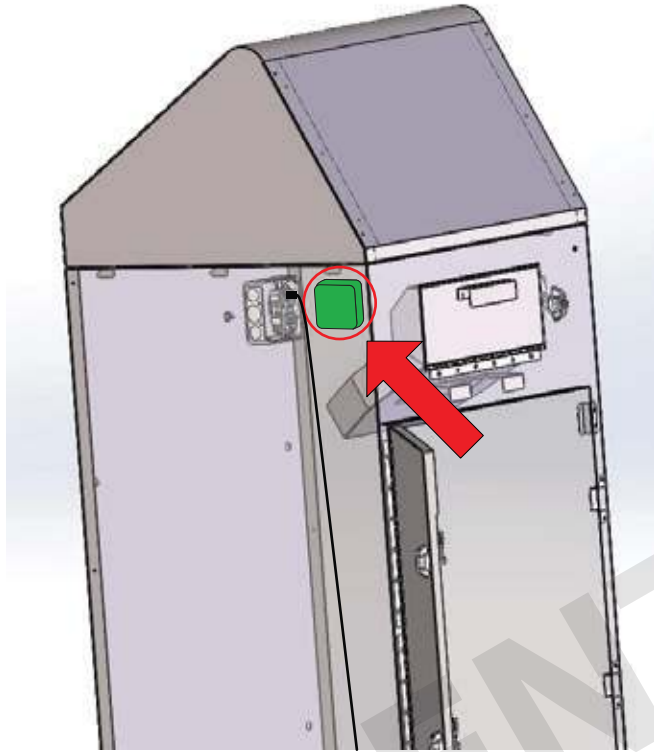
7B

**UNITS WITH OUT DISPLAY WITH BATTERY POWER (NO 110 AC)**  
REMOVE THE BATTERY CASE FROM THE INNER RIGHT SIDE OF THE KIOSK (ATTACHED WITH VELCRO)



8

INSERT 4 AA BATTERIES, CLOSE CASE. REATTACH BATTERY CASE.



9

REMOVE USB CABLE FROM OUTLET NEXT TO BATTERY CASE AND PLUG IT INTO BATTERY CASE. THIS INSTALL IS COMPLETE

